

READ ME

On this CD the viewer will find 4 entries:

1. The graphics contains folders with photos and maps from the sites described in *Khmer Sites in Eastern Thailand*, so that the reader can watch color photos on a computer or tablet along with reading the book.

2. Shortcuts to some references contains links to some of the references mentioned in the book. <http://books.google.co.th/books> gives partial access to many books and it is possible to search in the books on-line.

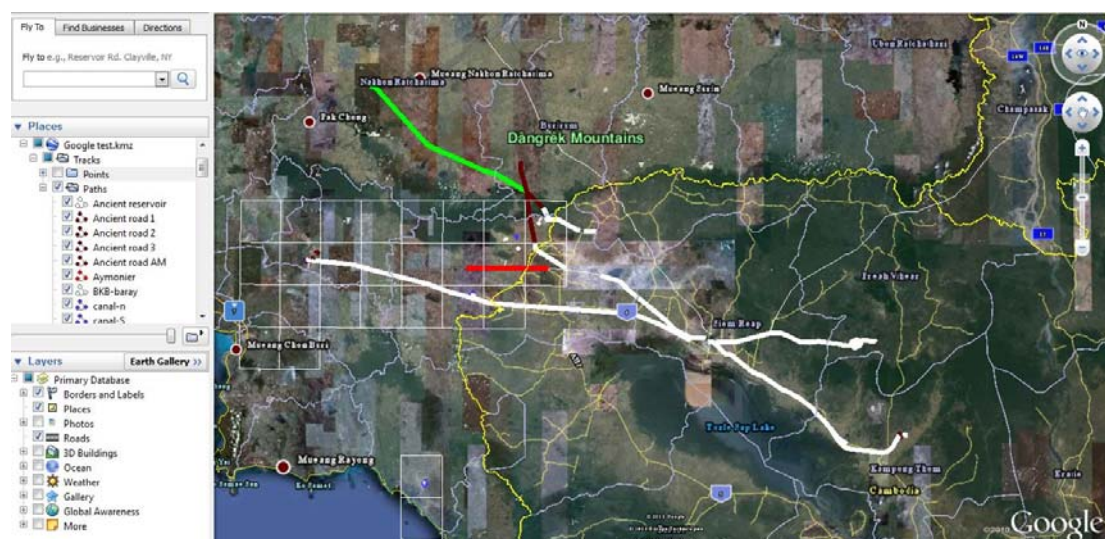
<http://www.google.com/> and <http://scholar.google.co.th/> can be recommended as well.

3. Address list in Thai and English is a word document with addresses of the sites in Thai and English.

4. GPS E-Thailand is KMZ file and by clicking on it your computer will show all sites, ancient routes, etc. described in *Khmer Sites in Eastern Thailand* in Google Earth (*see below*) - if Google Earth is installed on your computer.

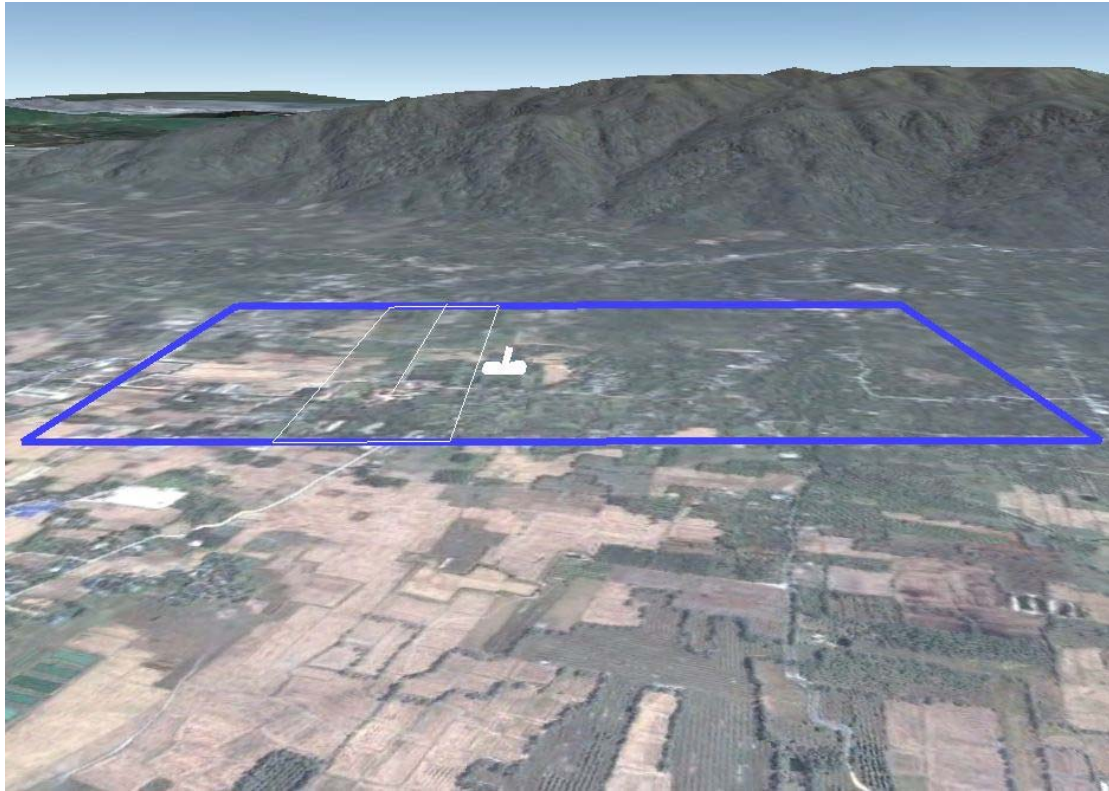
Download [Google Earth](http://www.google.com/earth/index.html) from <http://www.google.com/earth/index.html>.

It is thereby possible to read the book and "fly" from site to site either from a comfortable chair back home or from a field location via a laptop with internet access. Either way the reader can search the area and find a route to the site.



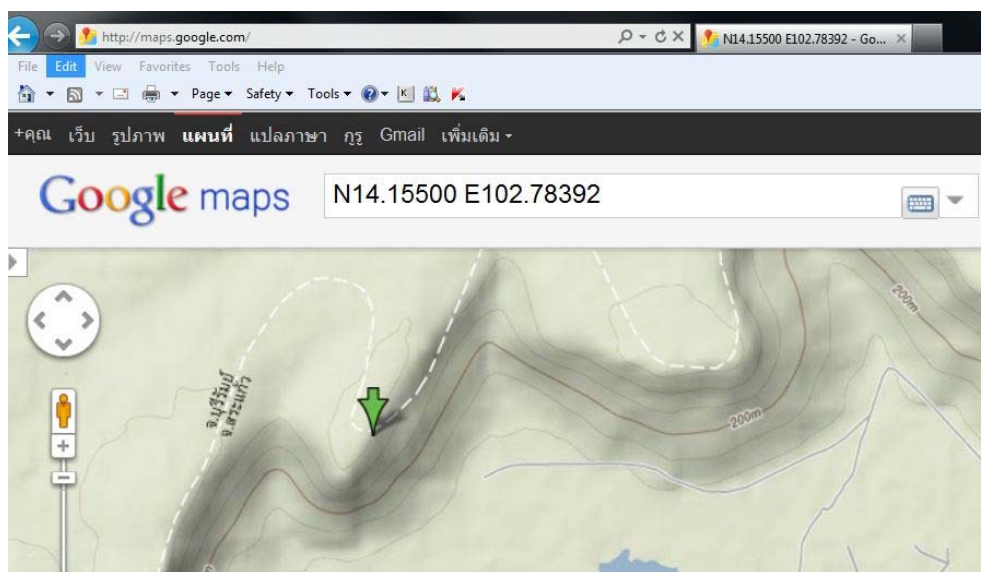
Google Earth also has the option of watching an area in 3-dimensions as demonstrated on the next picture. The blue rectangle shows the proposed extend of Mueang Phaniat in Chanthabury Province with the Phaniat site in white in the middle of the site as seen from west.

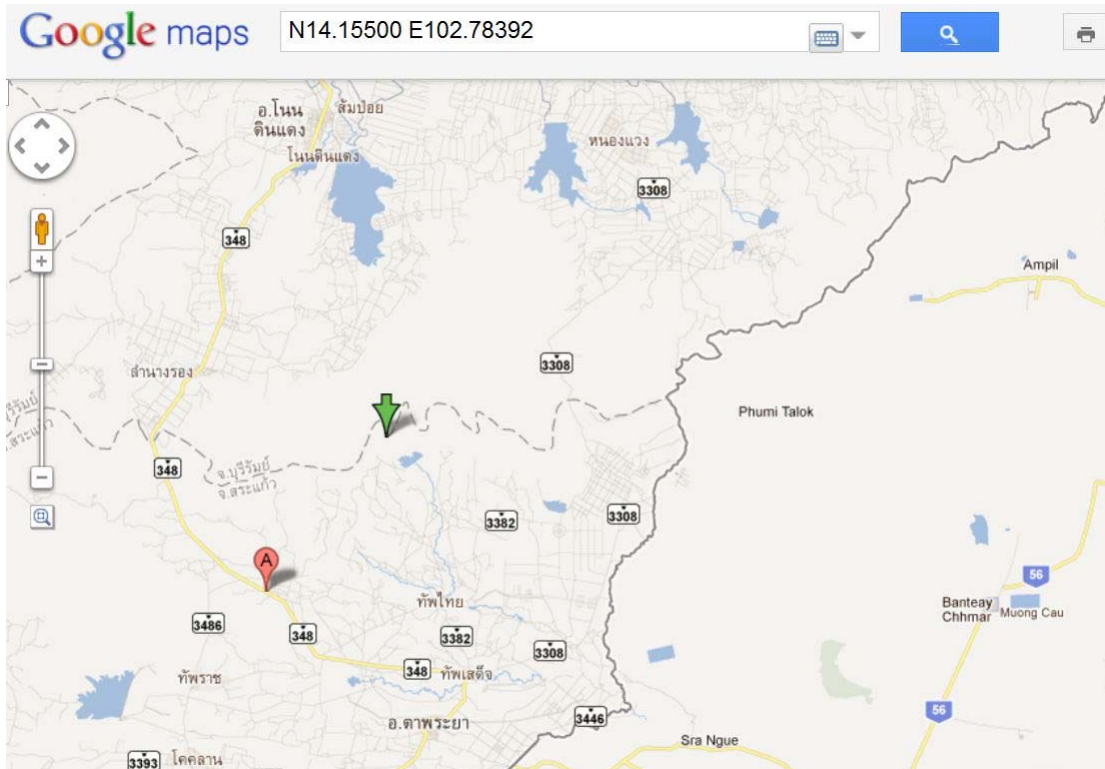
New coordinates can be written in the "Fly to" window (top left on the Google Earth panel) and after a click you will "fly" to the chosen location.



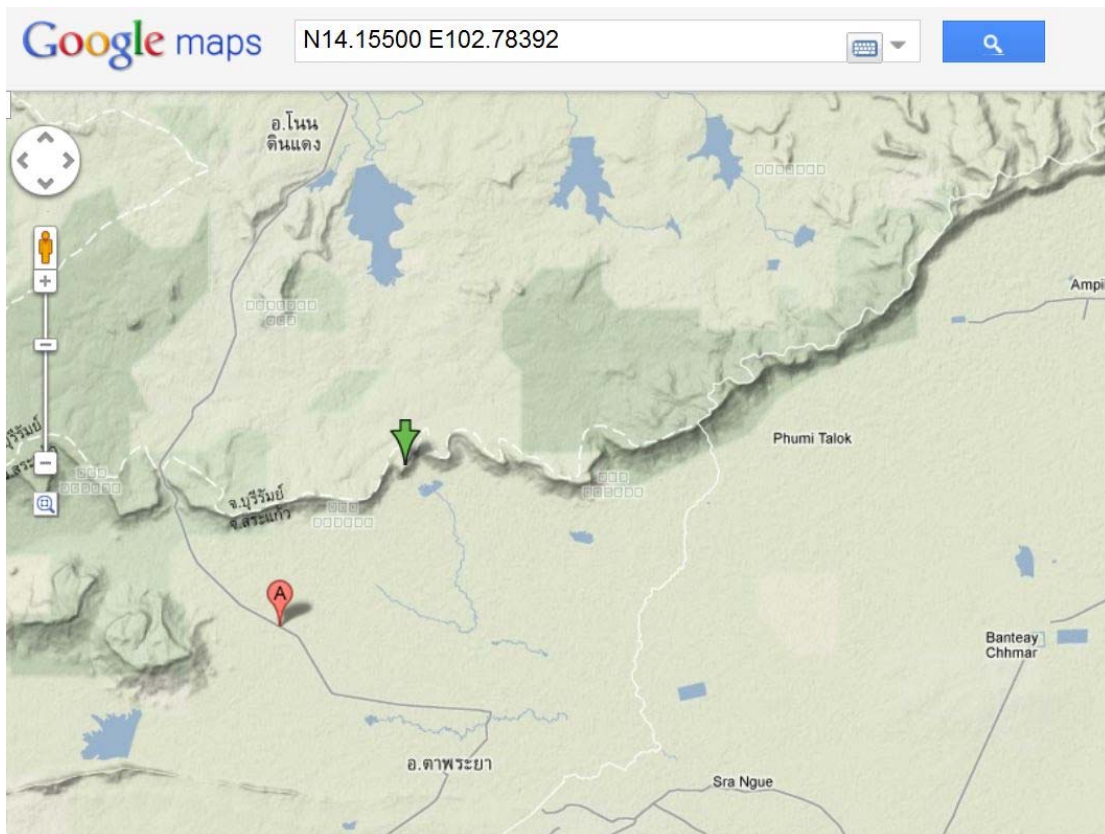
Another option for watching satellite images is to install **PointAsia** on the computer: [PointAsia](#) gives the user the option of "flying" to a location and see it from above. PointAsia is in some areas more detailed than Google Earth and in some areas they use older satellite images opening for the option of seeing a location 'before and after' when compared with Google images.

The last public satellite image option is **Google Map** [Google Map](#) does not need to be downloaded and installed on a computer. The service can be utilized from any computer with internet access. Just write the coordinates and Google brings you there (below and next pages):

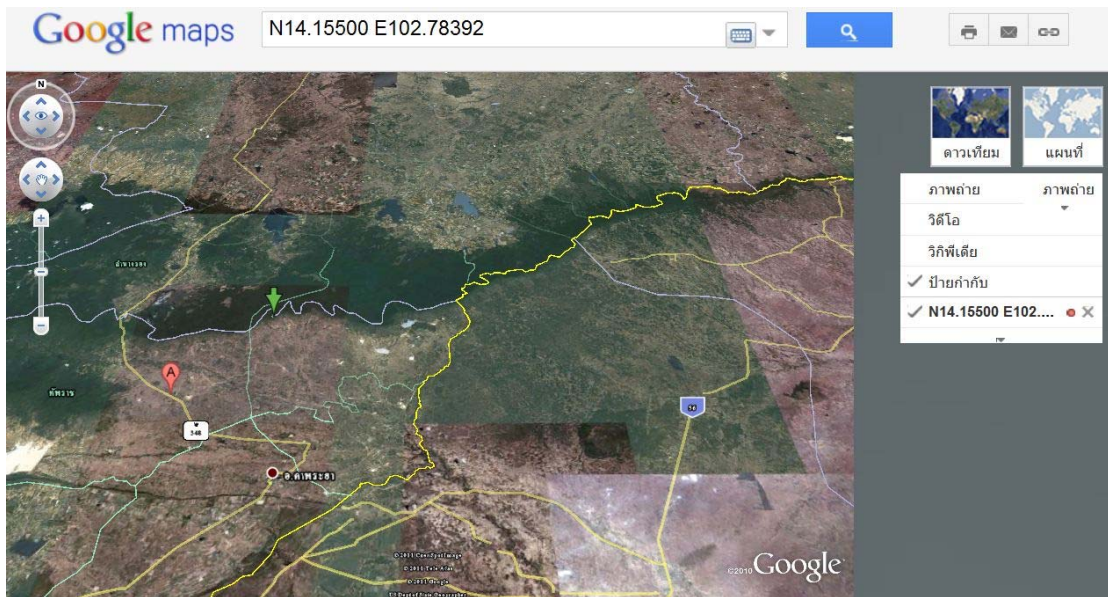




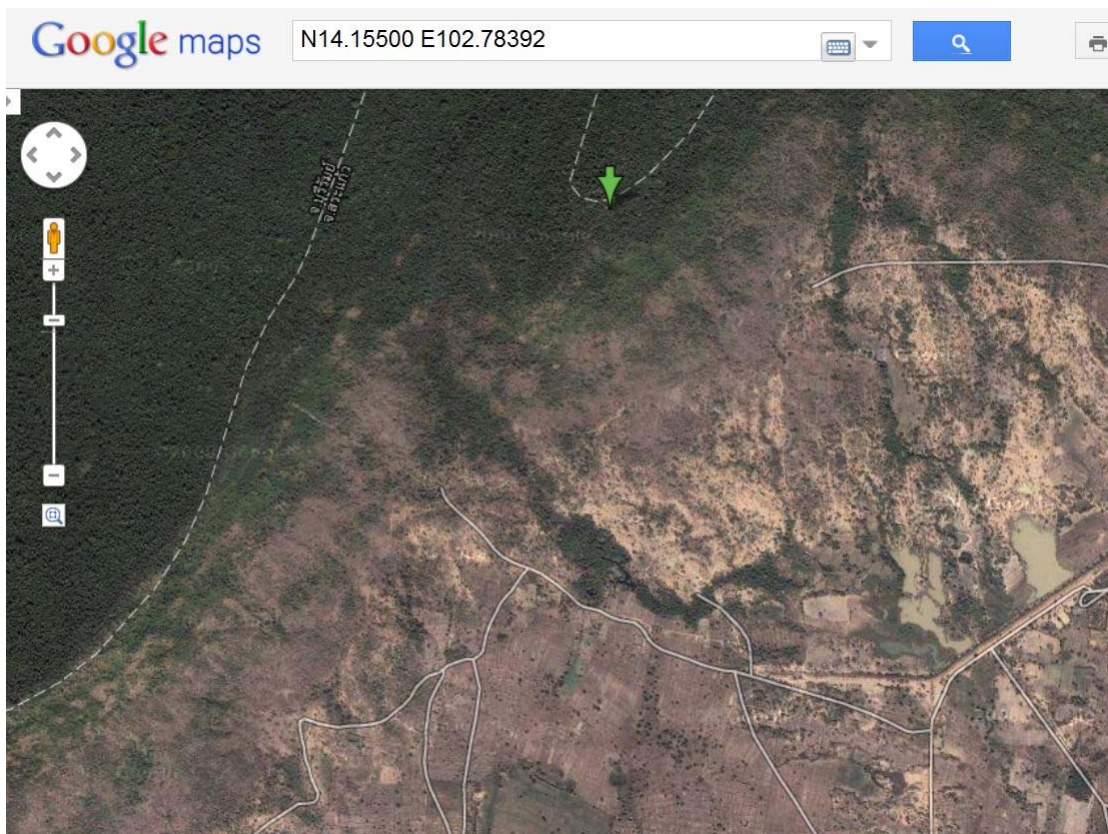
Normally Google Map opens as above showing a road-map.

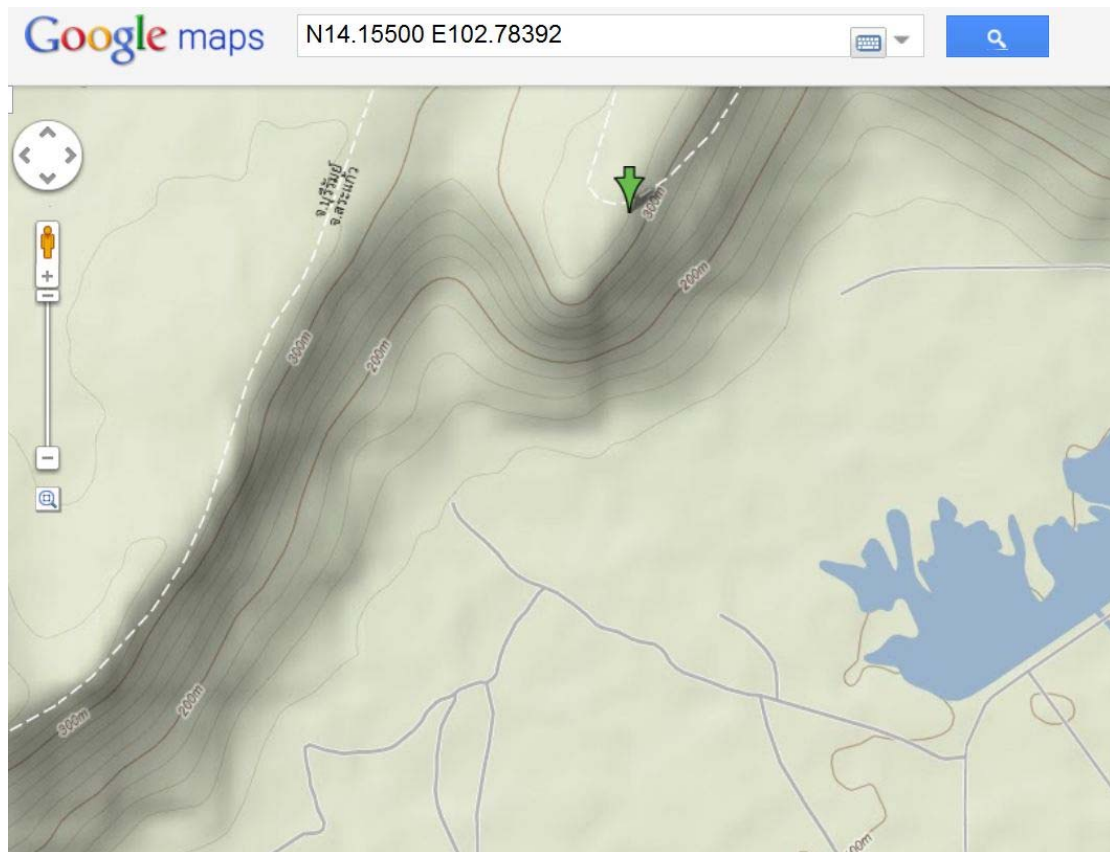


... a contour map is another option



or the location (Prasat Chong Sra Chaeng) can be seen as in Google Earth (*above and below*).





The reader of *Khmer Sites in Eastern Thailand* can write the coordinates as given in the book and make road-maps leading to the site interested in - or as above nearly to...

Smart-phones, tablets and other modern tools can probably also help the reader finding a site but the author have no experiences in using these tools and therefore no advices.

The author uses [Garmin GPSmap 60CXs](#), distributed in Thailand by [Esri](#) which goes with a very useful software. Roads and rivers are shown very accurately. All the waypoints and tracks shown in the KMZ file can be loaded and shortcuts to a destination be proposed. And at the end of the day the device can tell where the nearest accommodation is.

